

MIMOT CAMBODGE

Opening on 1 February 1929, the post office at Mimot first employed a type G1 postmark. No other postmarks are recorded from Mimot before Cambodia's independence.



POSTMARK TYPE: G1
PERIOD OF USE: 1931-49



POSTAL MARKINGS
MIMOT CAMBODGE 6-10 32
airmail label
REVERSE
PNOMPENH CAMBODGE 7-10 32

MONGKOLBOREY
CAMBODGE

One of the postmarks with the single word spelling "MONGKOLBOREY" was a type E1 device. The postmark was in use for a relatively short period of five years.



POSTMARK TYPE: E1
PERIOD OF USE: 1926-29



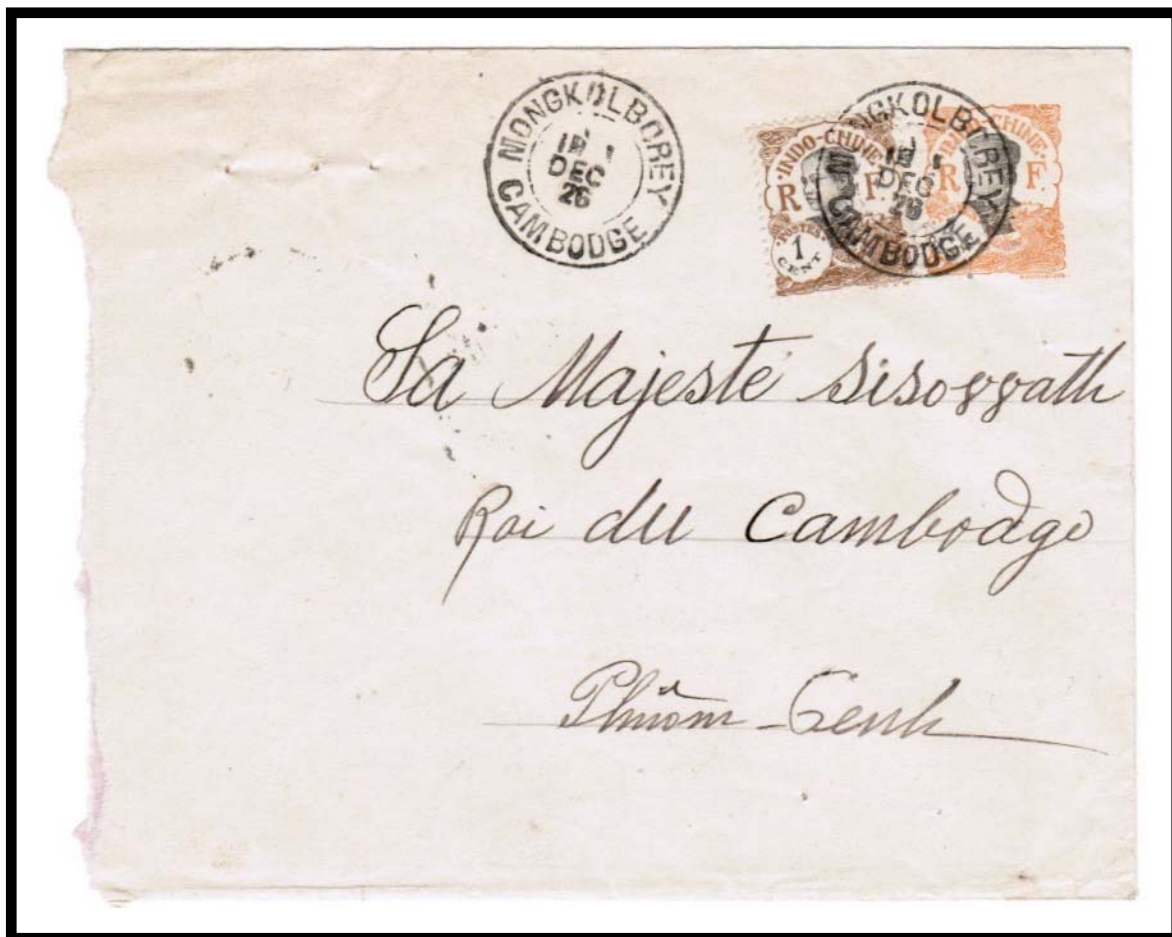
POSTAL MARKINGS
MONGKOLBOREY CAMBODGE 30 AVRIL 28
REVERSE
BATTAMBANG CAMBODGE 2-5 28
SAIGON-CENTRAL COCHINCHINE 5-5 28

MONGKOLBOREY
CAMBODGE

The earliest known date for Mongkolborey's type E1 postmark is this example from 1926.



POSTMARK TYPE: E1
PERIOD OF USE: 1926-29



POSTAL MARKINGS
MONGKOLBOREY CAMBODGE 1 DEC 26
REVERSE
PNOMPENH CAMBODGE 3-12 26

MONT BOKOR CAMBODGE

The post office at Mont Bokor opened on 10 October 1923 and the F1 format is the only recorded layout for Mont Bokor's postmarks. The earliest known use of the F1(ch) postmark is 1926.



POSTMARK TYPE: F1(ch)
PERIOD OF USE: 1926-31



POSTAL MARKINGS
MONT BOKOR CAMBODGE 27-2 26

MONT BOKOR CAMBODGE

The F1 format is the only recorded layout for Mont Bokor's postmarks. The type F1(ch) postmark was in use for only five years. The last recorded year of use was 1931.



POSTMARK TYPE: F1(ch)
PERIOD OF USE: 1926-31



POSTAL MARKINGS
MONT BOKOR CAMBODGE 16-2 31
REVERSE
PNOMPENH CAMBODGE 17-2 31

LE BOKOR CAMBODGE

After 1931, postmarks with "MONT BOKOR" gave way to "LE BOKOR." Only a single format is recorded for a Le Bokor postmark, a type G1 device. It remained in service until the post office closed in 1945.



POSTMARK TYPE: G1
PERIOD OF USE: 1931-43



POSTAL MARKINGS

LE BOKOR CAMBODGE 23-12 37

"Departed without leaving an address" handstamp
"Return to Sender" handstamp

MOUNG CAMBODGE

The Moug post office opened on 18 August 1907 and remained operational until 1 April 1932 when it transitioned to a rural post office. The first recorded postmark for Moug was a type E2 device. This example from 1926 is the latest known use of this postmark.



POSTMARK TYPE: E2
PERIOD OF USE: 1924-26



POSTAL MARKINGS

MOUNG CAMBODGE 19 JUN 26
framed R with manuscript registration number

REVERSE

PNOM-PENH CAMBODGE 21 JUN 26
SAIGON-CENTRAL COCHINCHINE 26-7 26

MOUNG CAMBODGE

The secondary Moug post office had closed on 1 April 1932 and became a rural post office. It reopened in 1947. The earliest known use of its type G1 postmark is 1947.



POSTMARK TYPE: G1
PERIOD OF USE: 1947-52



POSTAL MARKINGS
MOUNG CAMBODGE 21-10 47
REVERSE
PHNOMPENH CAMBODGE 22-10 47

PAILIN CAMBODGE

The Pailinh post office was open from 1912 to 1941, when the region was seized by the Siamese. Pailinh's earliest known postmark is a type F2(21t) device, which was in service for only four years. This example is the latest known use of this postmark.



POSTMARK TYPE: F2(21t)
PERIOD OF USE: 1925-28



POSTAL MARKINGS

PAILIN CAMBODGE 9 OCT 28 (blue)

REVERSE

BATTAMBANG CAMBODGE 8-10 28

slogan handstamp

PARIS-R.P. 6 DISTRUBON 10 • XI 1928

PAKSE
CAMBODGE

The office in France responsible for fabricating postmarks made mistakes with Pakse and several other towns. Instead of "LAOS" at the base, the postmark showed "CAMBODGE." Despite the obvious error, the postmark remained in service for several years.



POSTMARK TYPE: G1
PERIOD OF USE: 1924-27



POSTAL MARKINGS
PAKSE CAMBODGE 15-10 27
plain R with manuscript registration number

POIPET-FRONTIERE CAMBODGE

Effective 11 July 1929, "Poipet" became known as "Poipet-Frontiere." Only a single postmark type has been recorded with this designation.



POSTMARK TYPE: G1
PERIOD OF USE: 1931-39



POSTAL MARKINGS
ANGKOR CAMBODGE 2-11 31
POIPET-FRONTIERE CAMBODGE 3-11 31

PREK-KAK CAMBODGE

Prek-Kak's type G1 postmark with bold lettering was in service for over two decades.



POSTMARK TYPE: G1
PERIOD OF USE: 1928-49



POSTAL MARKINGS

PREK-KAK CAMBODGE 15-10 35
"PAR AVION JUSQU'A MARSEILLE routing instruction

REVERSE

PNOMPENH CAMBODGE 16-10 35
PARIS VIII RUE CLER 28 • X 1935

PREK-KAK
CAMBODGE

The last reported year of use for the type G1 postmark with the hyphenated "PREK-KAK" spelling was 1949.



POSTMARK TYPE: G1
PERIOD OF USE: 1928-49



POSTAL MARKINGS
PREK-KAK CAMBODGE 23-3 1949
REVERSE
PNOMPENH CAMBODGE 25-3 1949

PREKKAK CAMBODGE

The only postmark that ever employed the non-hyphenated "PREKKAK" spelling was a type G1 device. This example is the earliest known use from 1949.



POSTMARK TYPE: G1
PERIOD OF USE: 1949-51



POSTAL MARKINGS
PREKKAK CAMBODGE 15-12 1949
REVERSE
PHNOMPENH CAMBODGE 16-12 1949

PREYVENG CAMBODGE

The post office at Preyveng opened on 29 January 1898. The earliest recorded postmark for Preyveng is the type E2 device. This postmark remained in service for a quarter century.



POSTMARK TYPE: E2
PERIOD OF USE: 1900-27



POSTAL MARKINGS

PREYVENG CAMBODGE 8 JUIL 08

BANAM CAMBODGE 8 JUIL 08

REVERSE

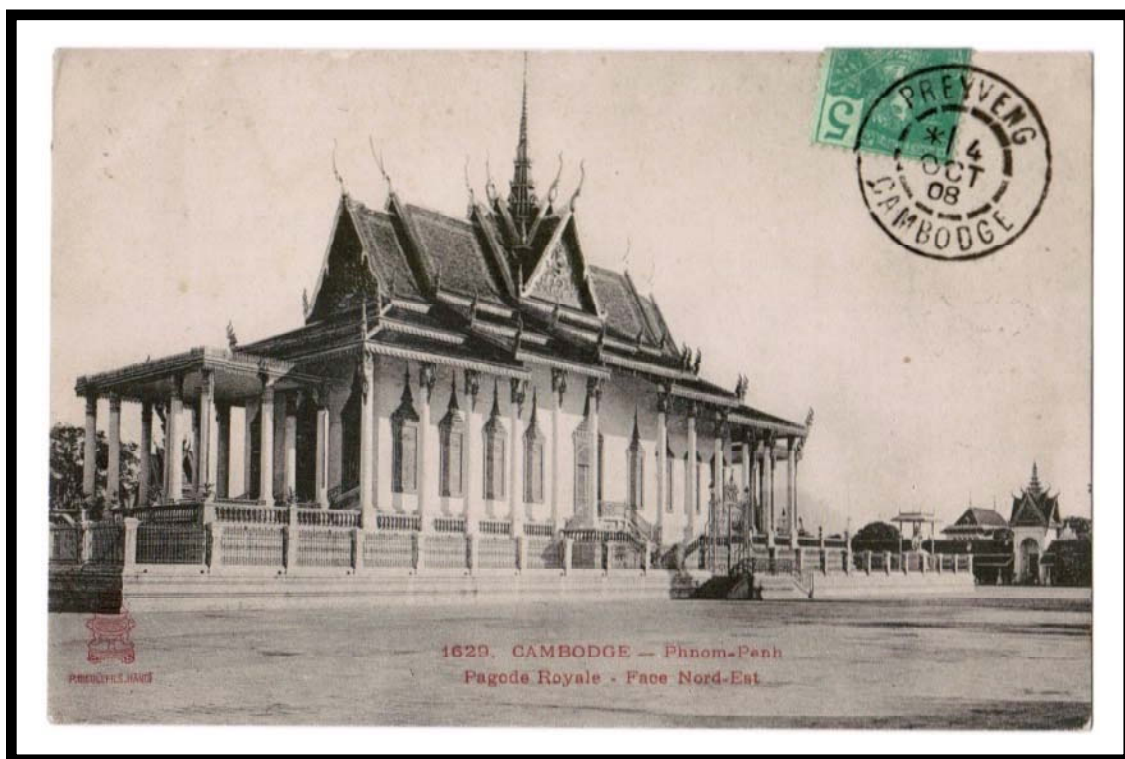
PREYVENG CAMBODGE 8 JUIL 08

PREYVENG CAMBODGE

Preyveng was one of Cambodia's provincial capitals. Preyveng's type E2 postmark remained in service for over a quarter century.



POSTMARK TYPE: E2
PERIOD OF USE: 1900-27



POSTAL MARKINGS
PREYVENG CAMBODGE 4 OCT 08

PREYVANG
CAMBODGE

Preyveng's type G postmark only employed numerals to express the date. It was replaced in 1937 with a type G1 device.



POSTMARK TYPE: G
PERIOD OF USE: 1930-37



POSTAL MARKINGS

PREYVANG CAMBODGE 12-4 35
airmail label

REVERSE

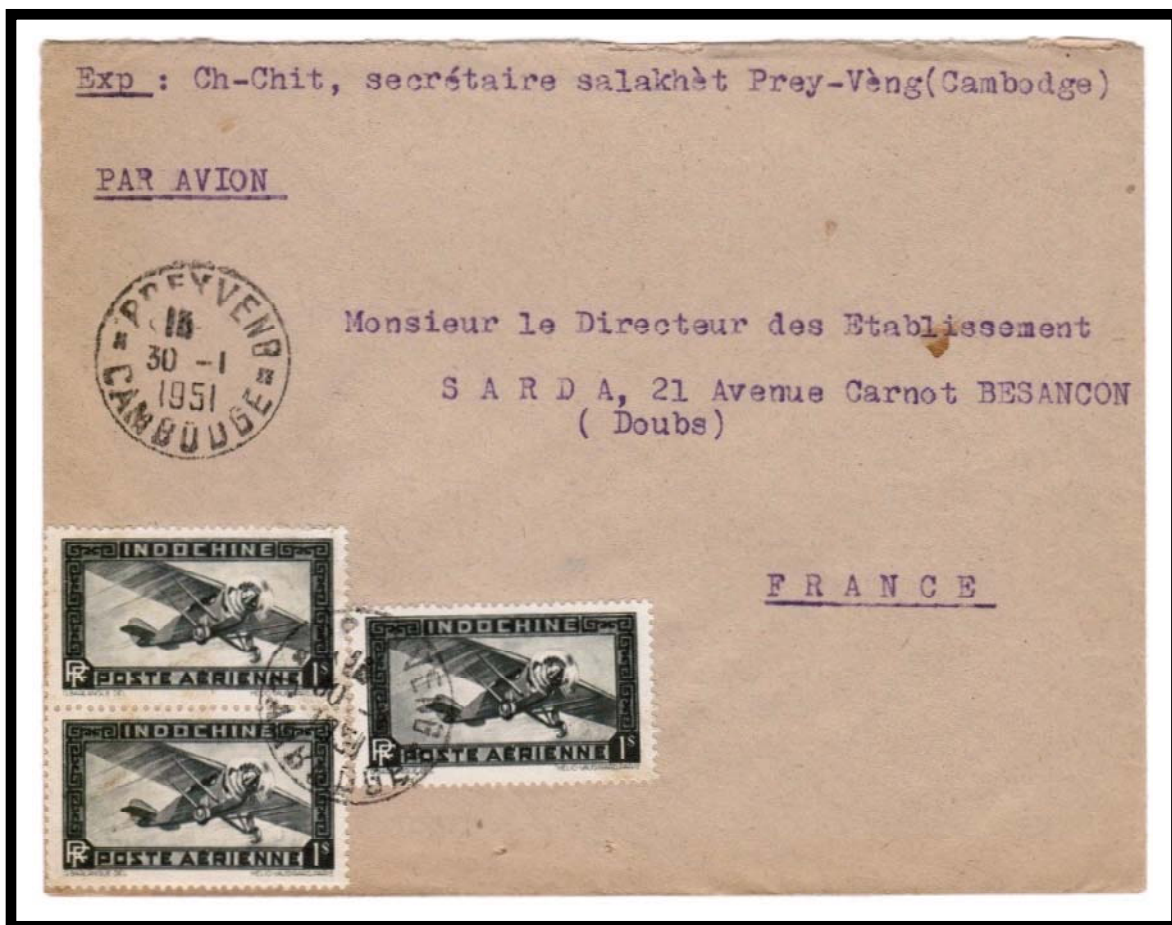
MARSEILLE-GARE-AVION B~~CHES~~ DU RHONE 22 • IV 1935

PREYVENG CAMBODGE

The last Preyveng postmark that was applied to Indochinese postage stamps was a type G1 device. Its final year of service was 1951.



POSTMARK TYPE: G1
PERIOD OF USE: 1938-51



POSTAL MARKINGS
PREYVENG CAMBODGE 30-1 1951

PURSAT CAMBODGE

Even though the Pursat post office started operating in 1883, its first recorded postmark is type E2 device in 1891. The E2 postmarked remained in service for nearly two decades.



POSTMARK TYPE: E2
PERIOD OF USE: 1891-1910



POSTAL MARKINGS
PURSAT CAMBODGE 30 JUL 07
REVERSE
PNOMPENH CAMBODGE 1 AOUT 07
YOKOHAMA A MARSEILLE L.N. N° 1 10 AOUT 07

PURSAT
CAMBODGE

In the E2(ch) variation, the month was indicated with a numeral instead of an abbreviation. Base on known dates of usage, the periods of use of the E2 and E2(ch) postmarks did not overlap.



POSTMARK TYPE: E2(ch)
PERIOD OF USE: 1916-27



POSTAL MARKINGS
PURSAT CAMBODGE 18-9 22

PURSAT CAMBODGE

Pursat was located between Phnompenh and Battambang near Tonle Sap Lake.
This example of Pursat's type G postmark is from its first year of use in 1928.



POSTMARK TYPE: G
PERIOD OF USE: 1928-38



POSTAL MARKINGS
PURSAT CAMBODGE 28-11 28
REVERSE
PNOMPENH CAMBODGE 29-11 28
NEVERS NIEVRE 29 XII 28

PURSAT CAMBODGE

Pursat's last postmark was a type G1 device that first entered service immediately prior to World War II in 1939.



POSTMARK TYPE: G1
PERIOD OF USE: 1939-51



POSTAL MARKINGS
PURSAT CAMBODGE 1-9 42

REAM
CAMBODGE

The post office at Ream, Cambodia opened on 1 January 1925. The post office is only known to have used a single postmark format, type G1.



POSTMARK TYPE: G1
PERIOD OF USE: 1925-48



POSTAL MARKINGS
REAM CAMBODGE 7-12 46

ROCAKONG
CAMBODGE

Even though its post office was opened as early as 1884, the only recorded postmark for Rocakong is a type G device. The earliest known use is from 1929.



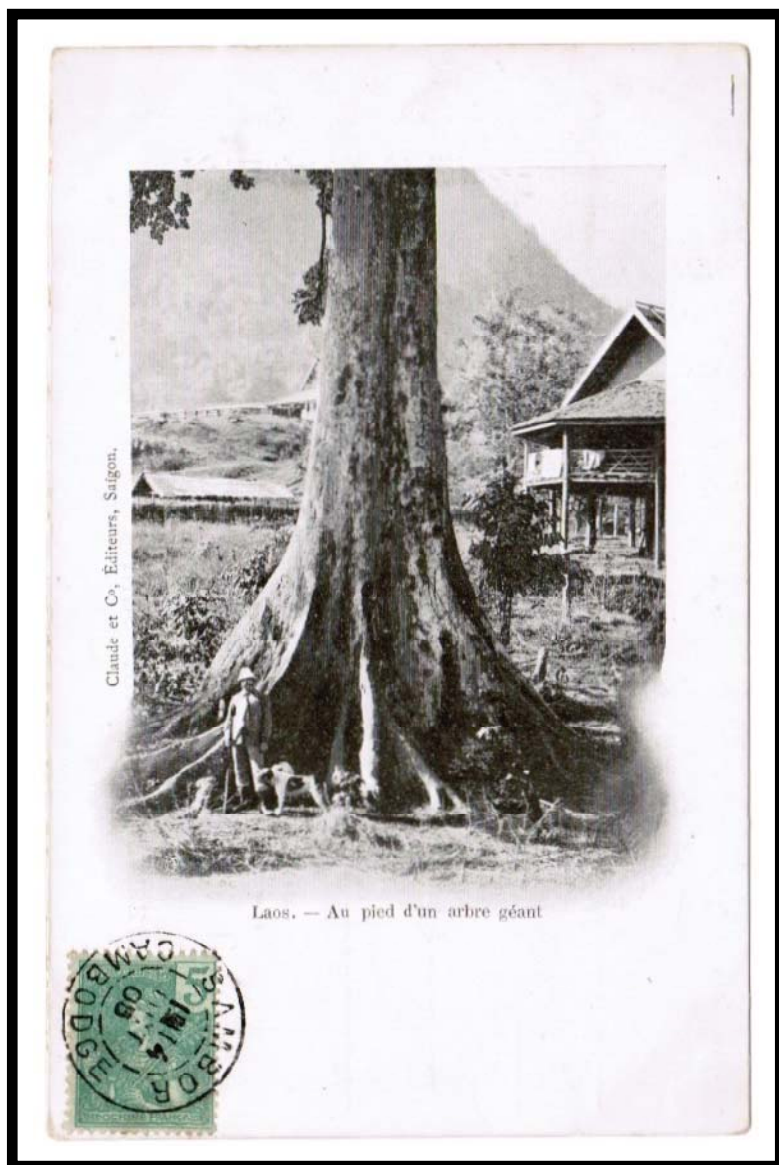
POSTMARK TYPE: G
PERIOD OF USE: 1929-49



POSTAL MARKINGS
ROCAKONG CAMBODGE 7-12 29
REVERSE
PHNOMPENH CAMBODGE 8-12 29

SAMBOR CAMBODGE

Sambor had a secondary post office. At the turn of the century, the post office employed a type E2 postmark. The last reported year of use of the type E2 postmark was 1908



POSTMARK TYPE: E2
PERIOD OF USE: 1891-1908

POSTAL MARKINGS
SAMBOR CAMBODGE 14 OCT 05

SAMBOR CAMBODGE

Opening in 1884, the Sambor post office had secondary status meaning that its ability to process registered mail and money orders was limited. At the turn of the century, the post office employed a type E2 postmark.

The Stung-Treng, Laos transit postmark only existed during 1903-05 and changed to "CAMBODGE" when the town reverted to Cambodia on 6 December 1904.



POSTMARK TYPE: E2
PERIOD OF USE: 1891-1908



POSTAL MARKINGS
SAMBOR CAMBODGE 29 JUIN 03
STUNG-TRENG LAOS 7 JUL 03

SAMRONG CAMBODGE

The post office at Samrong operated from 1911-1914, when the town became part of Thailand. Samrong's earliest postmark was a type E1 device. This example is from the device's first year of service.



POSTMARK TYPE: E1
PERIOD OF USE: 1911-14



POSTAL MARKINGS

SAMRONG CAMBODGE 10 OCT 11

REVERSE

SIEMREAP-ANGKOR CAMBODGE 22 OCT 11

PNOMPENH CAMBODGE 26 OCT 11

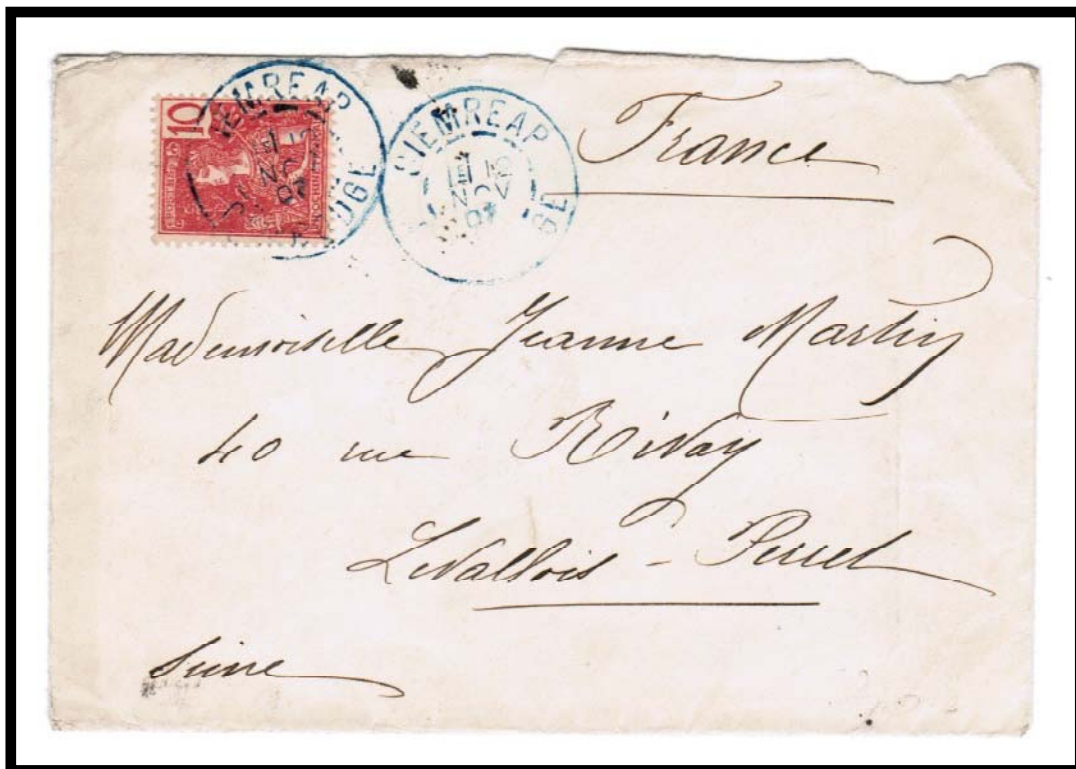
BARLEDUC MEUSE 22-11 11

SIEMREAP
CAMBODGE

The "SIEMREAP" name was used during two periods: 1907-08 and 1929-35. During the first period, only a single postmark format, E2, has been recorded and only in 1907.



POSTMARK TYPE: E2
PERIOD OF USE: 1907



POSTAL MARKINGS
SIEMREAP CAMBODGE 12 NOV 07 (blue)
REVERSE
PNOMPENH CAMBODGE 15 NOV 07
LEVALLOIS-PERRET SEINE 10-12 07

SIEMREAP CAMBODGE

The town name reverted to simply Siemreap from 13 April 1929 to 1 October 1935. The revived name appeared on a type G1 postmark, which curiously remained in use through 1936 when the town's name again became Siemreap-Angkor.



POSTMARK TYPE: G1
PERIOD OF USE: 1931-36



POSTAL MARKINGS

SIEMREAP CAMBODGE 1-4 36
slogan handstamp
PAR AVION JUSQU'A MARSEILLE

REVERSE

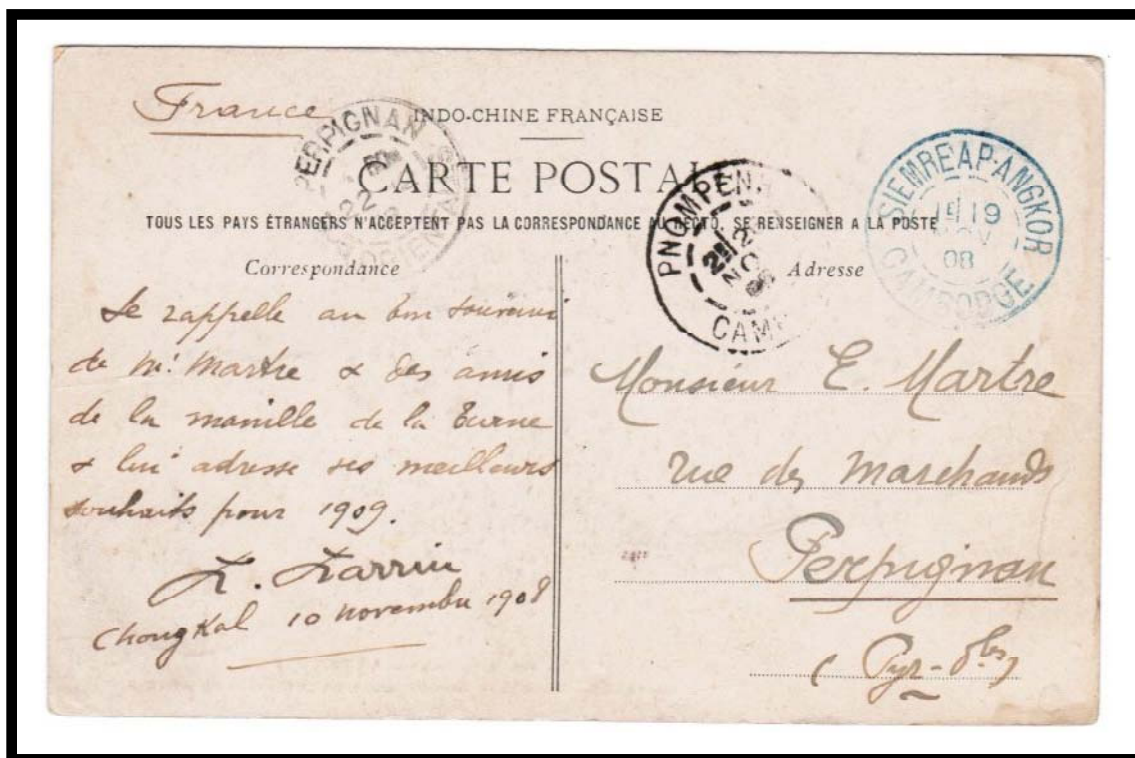
PNOMPENH CAMBODGE 2-4 36
PARIS XIV AV. D'ORLEANS 14 • IV 1936

SIEMREAP-ANGKOR CAMBODGE

One year after opening, the Siemreap post office became the “Siemreap-Angkor” post office. Its first postmark was the type E2 format (struck here in blue).



POSTMARK TYPE: E2
PERIOD OF USE: 1908-25



POSTAL MARKINGS

SIEMREAP-ANGKOR CAMBODGE 19 NOV 08
PNOMPENH CAMBODGE 20 NOV 08
PERPIGNAN PYR.ORIENTALES 22-12 08

SIEMREAP-ANGKOR
CAMBODGE

The E2(ch) variation with the month indicated by numerals instead of an abbreviation appeared in 1913 but went out of service a short time later in 1917. Its first postmark was the type E2 format (struck here in blue).



POSTMARK TYPE: E2(ch)
PERIOD OF USE: 1913-17



POSTAL MARKINGS
SIEMREAP-ANGKOR CAMBODGE 23-6 14 (blue)
REVERSE
PNOMPENH CAMBODGE 26 JUIN 14

SIEMREAP ANGKOR
CAMBODGE

This version of a Siemreap-Angkor postmark in the type G format has not been previously seen. It is the only known postmark with a space between "SIEMREAP" and "ANGKOR."



POSTMARK TYPE: G
PERIOD OF USE: 1928



POSTAL MARKINGS
SIEMREAP ANGKOR CAMBODGE 10-1 28
REVERSE
PNOMPENH CAMBODGE 11-1 28
PASIS XIII 11 • II 1928

SIEMREAP-ANGKOR CAMBODGE

This example from 1936 is the earliest recorded use of Siemreap-Angkor's type G1 postmark. The postmark continued in service until after World War II.



POSTMARK TYPE: G1
PERIOD OF USE: 1936-49



POSTAL MARKINGS

SIEMREAP-ANGKOR CAMBODGE 19-10-36

airmail label

registration label

REVERSE

PNOM-PENH CAMBODGE 22-10-36

PARIS DISTRIBUTION 2-11-36

SIEMREAP-ANGKOR CAMBODGE

The last year of use for Siemreap-Angkor's type G1 postmark was 1950. By the end of its life, the lateral separators had become simple dashes.



POSTMARK TYPE: G1
PERIOD OF USE: 1936-50



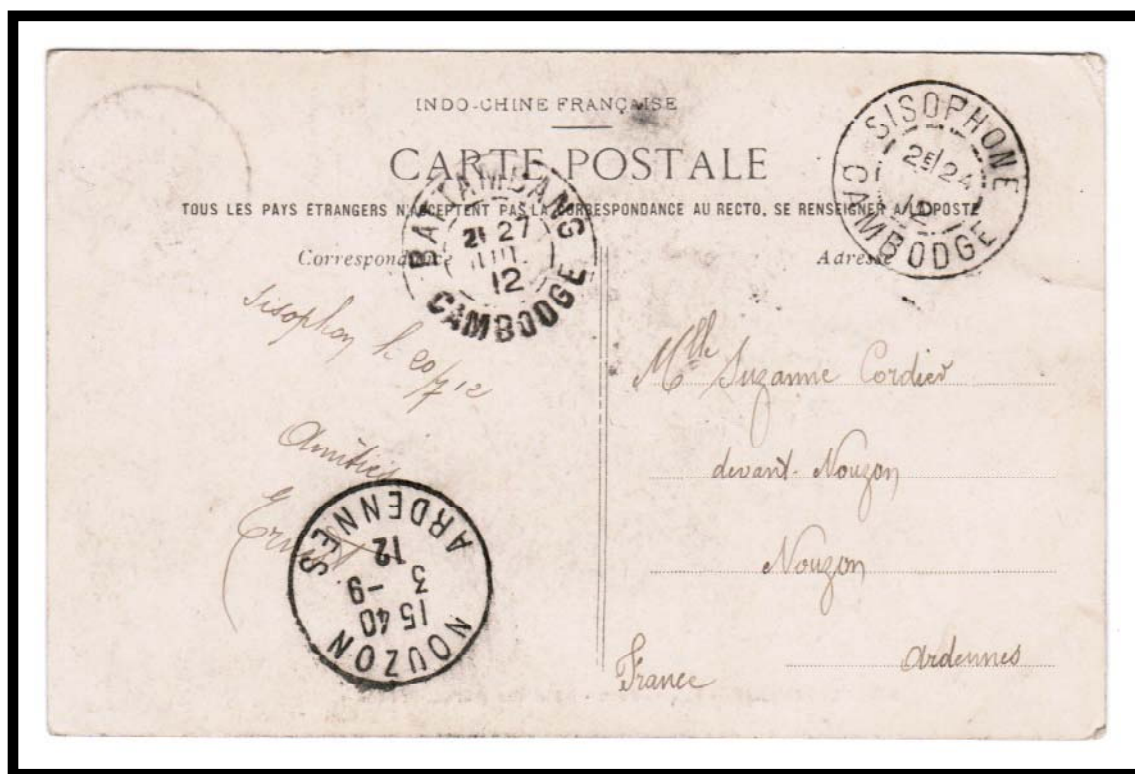
POSTAL MARKINGS
SIEMREAP-ANGKOR CAMBODGE 14-8 1950
REVERSE
PHNOMPENH CAMBODGE 15-6 1950

SISOPHONE CAMBODGE

Sisophone was a Thai province until it was ceded to Indochina in 1906. Its first postmark, a type E2 device, was in service for two decades.



POSTMARK TYPE: E2
PERIOD OF USE: 1907-26



POSTAL MARKINGS

SISOPHONE CAMBODGE 24 (JUIL) 12
BATTAMBANG CAMBODGE 27 JUIL 12
NOUZON ARDENNES 3-9 12

REVERSE

SISOPHONE CAMBODGE 24 (JUIL) 12

SISOPHONE
CAMBODGE

Located on the Thai border, Sisophone was under Thai control from 1907-41. The type G postmark was the town's last.



POSTMARK TYPE: G
PERIOD OF USE: 1939, 50-52



POSTAL MARKINGS
SISOPHONE CAMBODGE 23-11 1950
REVERSE
BATTAMBANG CAMBODGE 23-11 1950

SKOUN CAMBODGE

The Skoun post office opened in 1925. Skoun's only known postmark format is the type G1 format, which remained in service for almost three decades.



POSTMARK TYPE: G1
PERIOD OF USE: 1927-53



POSTAL MARKINGS

SKOUN CAMBODGE 5-4 31

airmail label and plain R with manuscript registration number

REVERSE

PHNOM-PENH CAMBODGE 6-4 31

SAIGON-CENTRAL COCHINCHINE 7-4 31

PARIS GARE DU NORD AVION 21•IV 1931

SNOUL
CAMBODIA

Snoul's post office opened on 5 July 1923. The only postmark employed at Snoul during the period of French control was a type G1 device.



POSTMARK TYPE: G1
PERIOD OF USE: 1924-45



POSTAL MARKINGS
SN OUL CAMBODGE 24-12 39
REVERSE
SAIGON-CENTRAL COCHINCHINE 24 DEC 39

SNOU-TROU CAMBODGE

The Snou-Trou post office operated from 1905 through 1929. This is the only known example of Snou-Trou's type F2 postmark.



POSTMARK TYPE: F2
 PERIOD OF USE: 1905



POSTAL MARKINGS
 SNOU-TROU CAMBODGE 18 SEPT 05
 REVERSE
 PNOMPENH CAMBODGE 19 SEPT 05
 CERET PYRENEES 20 OCT 05

SOAIRIENG
CAMBODGE

The Soairieng post office opened in 1887. The provincial capital's first recorded postmark is a type E2 device, which remained in service for a quarter century.



POSTMARK TYPE: E2
PERIOD OF USE: 1896-1921



POSTAL MARKINGS
SOAIRIENG CAMBODGE 15 AVRIL 05
REVERSE
TANAN COCHINCHINE 16 AVRIL 05

SOAIRIENG
CAMBODGE

The E2(ch) variation with the month indicated by numerals instead of an abbreviation appeared during World War I. Use of Soairieng's type E2(ch) and the long-lived E2 postmarks overlapped.



POSTMARK TYPE: E2(ch)
PERIOD OF USE: 1914-22



POSTAL MARKINGS

SOAIRIENG CAMBODGE 18-9 15

REVERSE

SAIGON-CENTRAL COCHINCHINE 20-9 15

ROMANS DROME 27-10 15

CHAMOS -CURSON DROME 29-10 15

SOAIRIENG
CAMBODGE

Soairieng's type F1 postmark is known from only a single year, 1924.



POSTMARK TYPE: F1
PERIOD OF USE: 1924



POSTAL MARKINGS

SOAIRIENG CAMBODGE 19 NOV 24
framed R with manuscript registration number

REVERSE

PARIS-X DISTRIBUTION 20-12 24

SOAIRIENG
CAMBODGE

The last postmark employed by Soairieng, a provincial capital, was a type G device. The town's name changed to Svay-Rieng in 1934.



POSTMARK TYPE: G
PERIOD OF USE: 1929-33



POSTAL MARKINGS

SOAIRIENG CAMBODGE 8-7 28
CHAMBERY SAVOIE 10-8 28

REVERSE

SAIGON-CENTRAL COCHINCHINE 9-7 28
PORT AUDEMER EURE 8-8 28
CHAMBERY SAVOIE 10-8 28

SOAIRIENG CAMBODGE

In 1926, the post office at Soairieng, Cambodia introduced the type G1 postmark. The type G1 postmark was one of the last to use the "SOAIRIENG" spelling. Starting in 1934, the town was called Svay-Rieng.



POSTMARK TYPE: G1
PERIOD OF USE: 1926-32



POSTAL MARKINGS

SOAIRIENG CAMBODGE 26-7 26
framed R with manuscript registration number

REVERSE

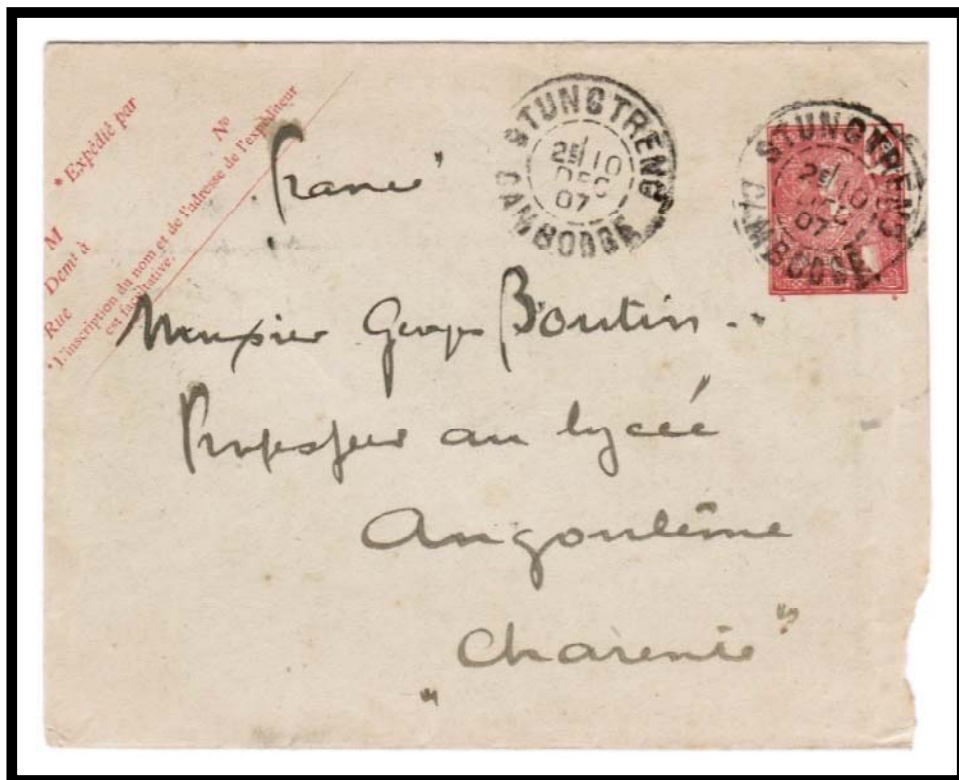
SAIGON CENTRAL COCHINCHINE 27-7 26
PARIS-X DISTRIBUTION 29-8 26

STUNG TRENG CAMBODGE

In 1904, Stungtreng was returned to Cambodia after having been under Lao control from 1893 to 1904. The Stungtreng post office resumed using the type E2 postmark in 1905.



POSTMARK TYPE: E2
PERIOD OF USE: 1894-5, 1905-12



POSTAL MARKINGS
STUNG TRENG CAMBODGE 10 DEC 07
REVERSE
SAIGON-CENTRAL COCHINCHINE 17 DEC 07
ANGOULEME CHARENTE 12-1 08

STUNG TRENG CAMBODGE

The final year of use of Stungtreng's E2(ch) postmark, a variation where the month was indicated by a numeral instead of an abbreviation, was 1926.



POSTMARK TYPE: E2(ch)
PERIOD OF USE: 1914-26



POSTAL MARKINGS
STUNG TRENG CAMBODGE 13-1 26

STUNG TRENG CAMBODGE

Stungtreng's type G1 postmark was in service immediately prior to independence. The earliest known use of the type G1 postmark is 1949.



POSTMARK TYPE: G1
PERIOD OF USE: 1949-52



POSTAL MARKINGS
STUNG TRENG CAMBODGE 12-7 1949
airmail label

SUONG CAMBODGE

The Suong post office opened on 12 January 1921 and remained in operation through Cambodia's independence. Suong's earliest reported postmark was a type F1 device that began service in 1922.



POSTMARK TYPE: F1
PERIOD OF USE: 1910-25



POSTAL MARKINGS
SUONG CAMBODGE 24 JANCV 22
REVERSE
KOMPONG-TIAM CAMBODGE 24 NOV 22
PHNOMPENH CAMBODGE 15-12 22
MONTIGNY S/ LOIRE SEINE ET MARNE 2-1 23

SUONG CAMBODGE

Introduced in 1928, Suong's short-lived type G postmark disappeared at the start of World War in 1940. No other Suong postmarks are reported until after Cambodia's independence.



POSTMARK TYPE: G
PERIOD OF USE: 1928-40



POSTAL MARKINGS

SUONG CAMBODGE 14-2 40

REVERSE

PHNOMPENH CAMBODGE 15-2 40

DEAUVILLE CALVADOS 26 II 40

SUONG CAMBODGE

Suong's type G postmark appeared in 1928 and remained in service for over a decade. No other postmark is known from Suong until after Cambodia's independence on 9 November 1953.



POSTMARK TYPE: G
PERIOD OF USE: 1928-40



POSTAL MARKINGS
SUONG CAMBODGE 28-4 39
REVERSE
SAIGON-CENTRAL COCHINCHINE 29 AVR 39
PARIS XVII DISTRIBUTION 5 MAI 39

SUONG CAMBODGE

Introduced in 1937, Suong's type G1 postmark remained in service for over a decade, until Cambodian independence in 1950



POSTMARK TYPE: G1
PERIOD OF USE: 1937-50



POSTAL MARKINGS

SUONG CAMBODGE 20-2 43
registration label

REVERSE

KOMPONGCHAM CAMBODGE 21-2 43
PNOMPENH CAMBODGE 22-2 43
SAIGON-CENTRAL 27-2 43

SVAY-RIENG CAMBODGE

In 1934, Soairieng's name changed to Svay-Rieng. The only postmark that used the hyphenated spelling was a type G1 format device.



POSTMARK TYPE: G1
PERIOD OF USE: 1935-43



POSTAL MARKINGS
SVAY-RIENG CAMBODGE 30-9 38
REVERSE
SAIGON-CENTRAL COCHINCHINE 30 SEPT 38

SVAYRIENG
CAMBODGE

Svayrieng's only postmark that employed the non-hyphenated "SVAYRIENG" spelling was in the uncommon 24-millimeter type G4 format.



POSTMARK TYPE: G4
PERIOD OF USE: 1949-50



POSTAL MARKINGS
SVAYRIENG CAMBODGE 7-9 1950
airmail label

TAKEO CAMBODGE

The cover bears the earliest known examples of Takeo's type E2(ch) postmark.



POSTMARK TYPE: E2(ch)
PERIOD OF USE: 1915-23



POSTAL MARKINGS

TAKEO CAMBODGE 3-11 1915
framed R with manuscript registration number

REVERSE

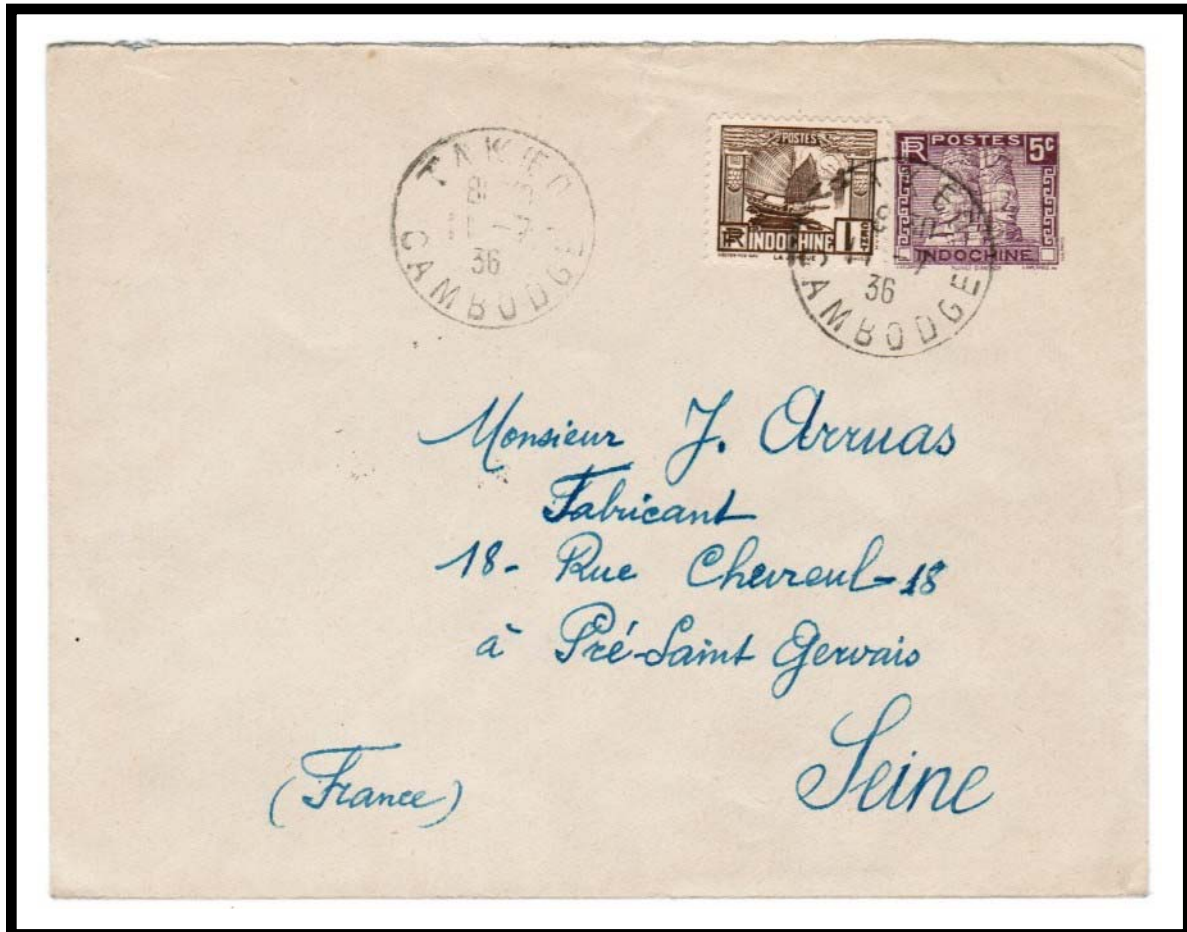
CHAUDOC COCHINCHINE 4-11 15
SAIGON-CENTRAL COCHINCHINE 6-11 15
SAINT-ETIENNE LOIRE 8-12 15

TAKEO CAMBODGE

Introduced in 1929, Takeo's type G postmark displaced the older type E and type F postmarks. The type G postmark remained in service for over two decades.



POSTMARK TYPE: G
PERIOD OF USE: 1929-51



POSTAL MARKINGS
TAKEO CAMBODGE 11-7 36
REVERSE
PNOMPENH CAMBODGE 12-7 36
LE PRE-ST GERVAIS SEINE 12-8 36

TAKEO CAMBODGE

First appearing in 1929, Takeo's type G postmark was in use for over two decades with its last reported use in 1951.



POSTMARK TYPE: G
PERIOD OF USE: 1929-51



POSTAL MARKINGS

TAKEO CAMBODGE 16-10 1951
airmail and registration labels

REVERSE

PHNOM-PENH CAMBODGE 17-10 1951
PARIS VII DISTRIBUTION 27-10 1951

TAKEO
CAMBODGE

This cover has the earliest known examples of Takeo's type G1 postmark.



POSTMARK TYPE: G1
PERIOD OF USE: 1950-53



POSTAL MARKINGS
TAKEO CAMBODGE 6-12 1950
REVERSE
PHNOMPENH CAMBODGE 7-12 1950

TAKHMAU CAMBODGE

Takhmau's long-lived type G1 postmark was in service for over two decades. The last known year of use for the type G1 postmark is 1950.



POSTMARK TYPE: G1
PERIOD OF USE: 1928-50



POSTAL MARKINGS
TAKHMAU CAMBODGE 20-10 1950

VEUNSAI
CAMBODGE

Effective 11 July 1929, the spelling of the town's name went from "Veune Sai" to "Veunsai." Only a single postmark format is known with the later designation.



POSTMARK TYPE: G1
PERIOD OF USE: 1931-49



POSTAL MARKINGS
VEUNSAI CAMBODGE 19-1 1949
REVERSE
VEUNSAI CAMBODGE 19-1 1949
STUNG TRENG CAMBODGE 20-1 1949